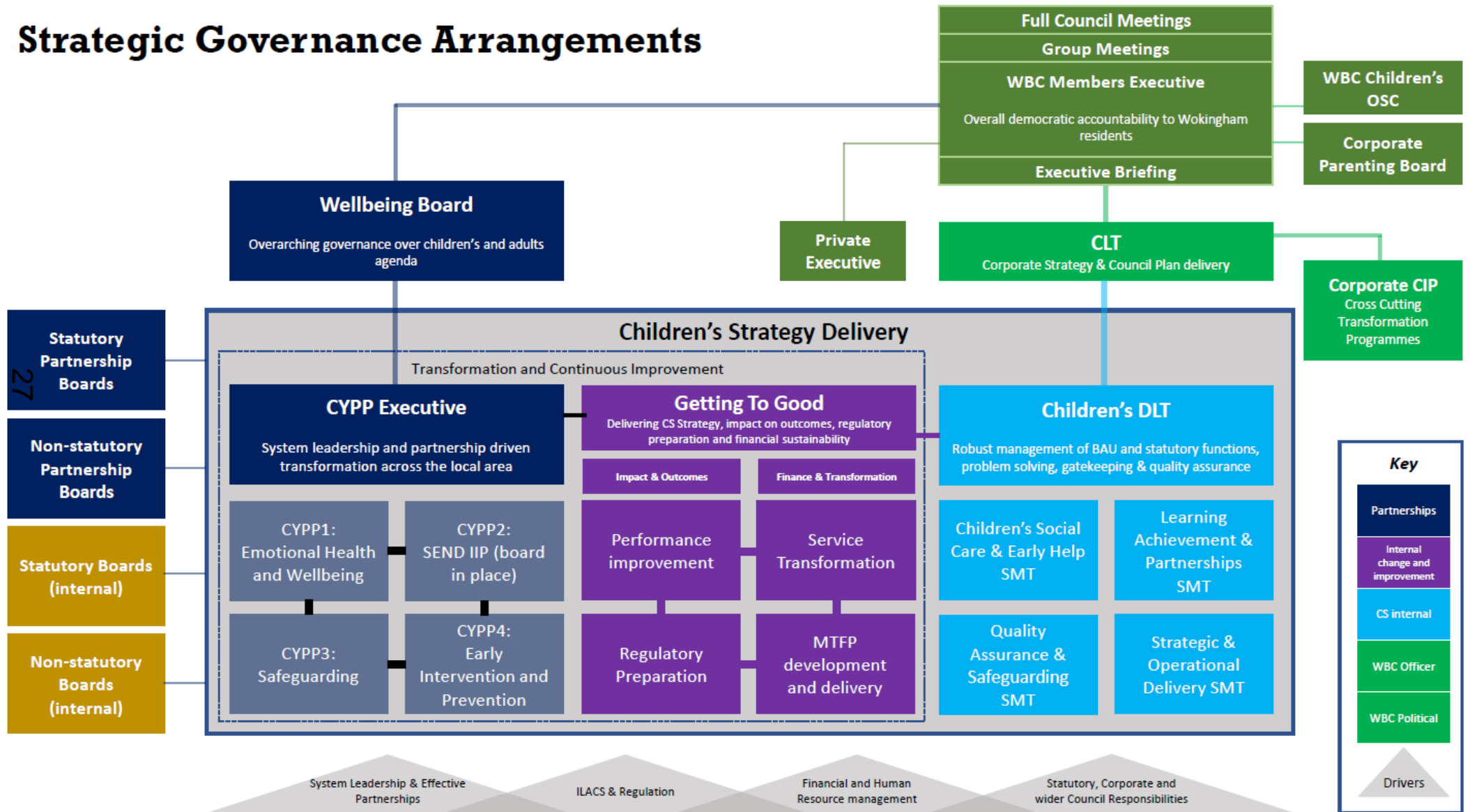
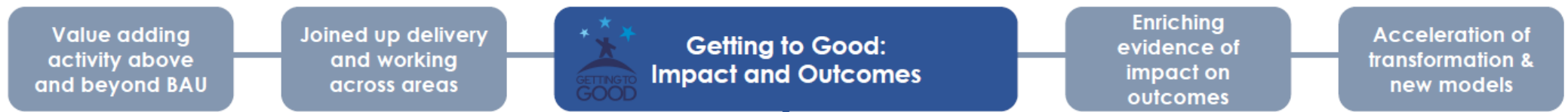


Strategic Governance Arrangements



From Strategy to Delivery



PRIORITY	SP1. Ensure we are designed to deliver excellent outcomes for all children, young people & families in Wokingham	SP2. Excel in our practice, be known for the quality of our work, and perform to the highest standards	SP3. Develop effective strategies which improve outcomes and deliver them in the most efficient way	SP4. Recruit, develop and retain a high-performing children's workforce	SP5. Strengthen our partnerships, drive system leadership & put children at the heart of everything Wokingham does
STRATEGIC OBJECTIVES	<p>SP1.1) Develop a sustainable future model and design of children's service</p> <p>SP1.2) Embed our models of early intervention and prevention, including Early Help, Edge of Care and Emotional Wellbeing</p> <p>SP1.3) Continue to develop and embed an effective approach to tackling exploitation</p> <p>SP1.4) Embed innovative models of support for CWD, SEND and Inclusion</p>	<p>SP2.1) Continue to drive improvements in performance & practice standards</p> <p>SP2.2) Set challenging goals for all our services, and continually challenge ourselves to be the best we can be</p> <p>SP2.3) Target our business change and continuous improvement activities</p>	<p>SP3.1) Ensure our strategies have impact and focus on delivering better outcomes</p> <p>SP3.2) Continuously improve our ways of working, pathways & processes</p> <p>SP3.3) Strengthen our data and information management</p> <p>SP3.4) Work in an agile and flexible way to help manage demand</p> <p>SP3.5) Make intelligent decisions about how we best manage risks & financial resources</p>	<p>SP4.1) Refresh and reinvigorate our approach to recruitment</p> <p>SP4.2) Invest in and support our staff to grow in their roles and capabilities, and accelerate in their careers</p> <p>SP4.3) Strengthen retention & succession planning</p> <p>SP4.4) Responding successfully to prevailing and forecast changes in the job market</p> <p>SP4.5) Build effective and successful leaders</p>	<p>SP5.1) Strengthen the strategic focus and nature of our partnership working</p> <p>SP5.2) Deliver genuine coproduction at the strategic and individual level</p> <p>SP5.3) Drive a "one Wokingham" approach to improved outcomes for children, young people and families, across the council and the Wokingham area</p> <p>SP5.4) Strengthen our relationship with Schools to collectively improve outcomes for children and young people</p>
LEADS	<ul style="list-style-type: none"> AD Learning Achievement and Partnerships AD Strategic and Operational Delivery 	<ul style="list-style-type: none"> AD Quality Assurance and Safeguarding Support AD Safeguarding & Early Help 	<ul style="list-style-type: none"> AD Strategic and Operational Delivery AD Quality Assurance and Safeguarding Support 	<ul style="list-style-type: none"> AD Safeguarding and Early Help AD Learning Achievement and Partnerships 	<ul style="list-style-type: none"> AD Strategic and Operational Delivery Additional Lead TBC

28

PROGRAMME SUPPORT: Viki Elliot-King (Programme and Project Management); Jo Jolly (Programme and Project Management); Matthew Booth (Programme and Project Management)

+ Project Managers and Project Support as required and as per Business Case